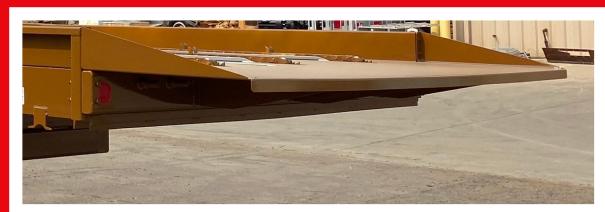


# KIRBY 1-TON BALE PROCESSOR



GET  
MORE  
DONE.



CONTACT KIRBY AT  
KIRBYMFG.COM OR BY  
PHONE AT (209) 723-0778

484 S HIGHWAY 59 MERCED, CA 95340

# BALE PROCESSOR FEATURES AND OPTIONS



**BALE BEATER CABINET**



**DISCHARGE BELT**



**TWINE HOOKS**

**TRUCK OR TRAILER MOUNTED, THE KIRBY 1 TON BALE PROCESSOR TAKES THE JOB OF AS MANY AS 4 RANCH HANDS AND REDUCES IT TO ONE WORKER OPERATING FROM THE COMFORT OF THE CAB.**

Begin turning up to 9 bales of hay into a palatable feed with the flick of a switch! The variable speed floor drag chain ensures a consistent flow of hay to the beaters while Kirby's unique floor chain design prohibits hay from being pulled into the crossfeed. With a commitment to quality and excellence that is backed by decades of field proven reliability, Kirby Processors keep you running strong.

## UNIT SPECS (ALL HEIGHTS IN INCHES)

Capacity	2, 4, 6, 9 Bales
Overall Height	<b>121</b>
Overall Length	<b>315, 411</b>
Overall Width	<b>86, 118, 125</b>
Discharge Height Trailer	<b>38</b>
Belt Conveyor Width	<b>30</b>
Weight	<b>8400 LBS. (6 BALE)</b>
PTO Requirements	<b>540, 1000</b>
Minimum HP Requirement	<b>50HP, 80HP</b>

## STANDARD FEATURES

- Right hand 30" Discharge Belt w/ Belt Cleaner
- Left Hand for Truck Mounts
- Three Round Beaters with 2" Shafts
- Reversible Serrated Cutting Knives
- 80H Beater Chain Drive OR 50:1 Gearbox
- Automotive Style Crimped Grease Lines
- 2" Floor Shaft
- Spiked Floor Chains with Variable Speed Control
- Dual Tires 11R 22.5 (Flotation Tires Optional)
- Wind Guard
- Adjustable Clevis Hitch
- Safety Slip Clutch

## OPTIONAL FEATURES

- Scale System
- UHMW Liner Under Discharge Belt (for Cold Country)
- 6 Floor Chains for Smaller Bales
- Flip Gate Floor Extension
- 12" Conveyor Extension (Truck Mounts)
- Full or Semi-Hydraulic



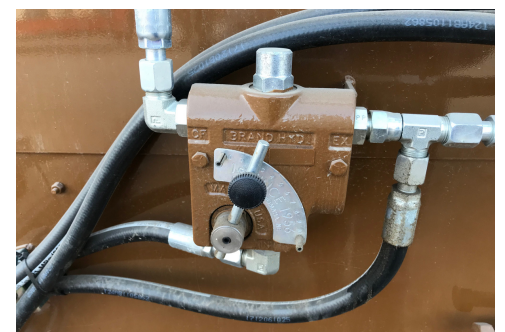
**CONTACT KIRBY AT  
KIRBYMFG.COM OR BY  
PHONE AT (209) 723-0778**



**FLOTATION TIRES**



**WINDGUARD**



**1-10 FLOOR FLOW CONTROL**